



REGULATION ON SECTORIZATION OF _CTR AREAS OF RESPONSIBILITY

1. Sectors of _CTR positions may be classified in two categories: primary and secondary. Primary sectors will not have parent sectors and will either be considered as superior in regard to other (secondary) sectors or will not have any “children” (subordinate) sectors.

2. A sector is considered subordinate to another in the case that its position identifier contains a middle section and another sector exists, the ATC position identifier of which shares the same ICAO code, but does not include a middle section.

***Example:** UUWV_N_CTR is considered a subordinate sector of UUWV_CTR, and consequently - a secondary sector, while ULLL_S_CTR is to be considered a primary sector, as no superior exists.*

3. In cases when both superior and subordinate sectors are present online, their AORs are split as follows within the horizontal borders of the subordinate sector: the border lies as a vertical plane at FL265. In such cases the secondary sector shall be in control of airspace at or below FL265, and the primary - of that above FL265. Exceptions may be made in accordance with this regulation and *Annexes*.

In case no primary sector is present online, the secondary sector shall exercise control of all airspace within their horizontal boundaries, where the airspace is controlled (classes A, B, C, D, E).

Following the top-down rule, a primary sector takes control of all subordinate secondary sectors that are not online.

4. If necessary, a _CTR controller in charge of a primary sector are in their right to limit their AOR to the upper airspace within their sector's horizontal boundaries (above FL265) even in the cases when no subordinate sectors are online, by appending this information to the “Remarks” section of their ATIS configuration. *Controllers in charge of secondary sectors may not exercise this procedure.*

5. Horizontal AORs of secondary _CTR sectors are outlined in *Annex #1* to the present regulation, as displayed in sector-files, and IVAO Webeye.

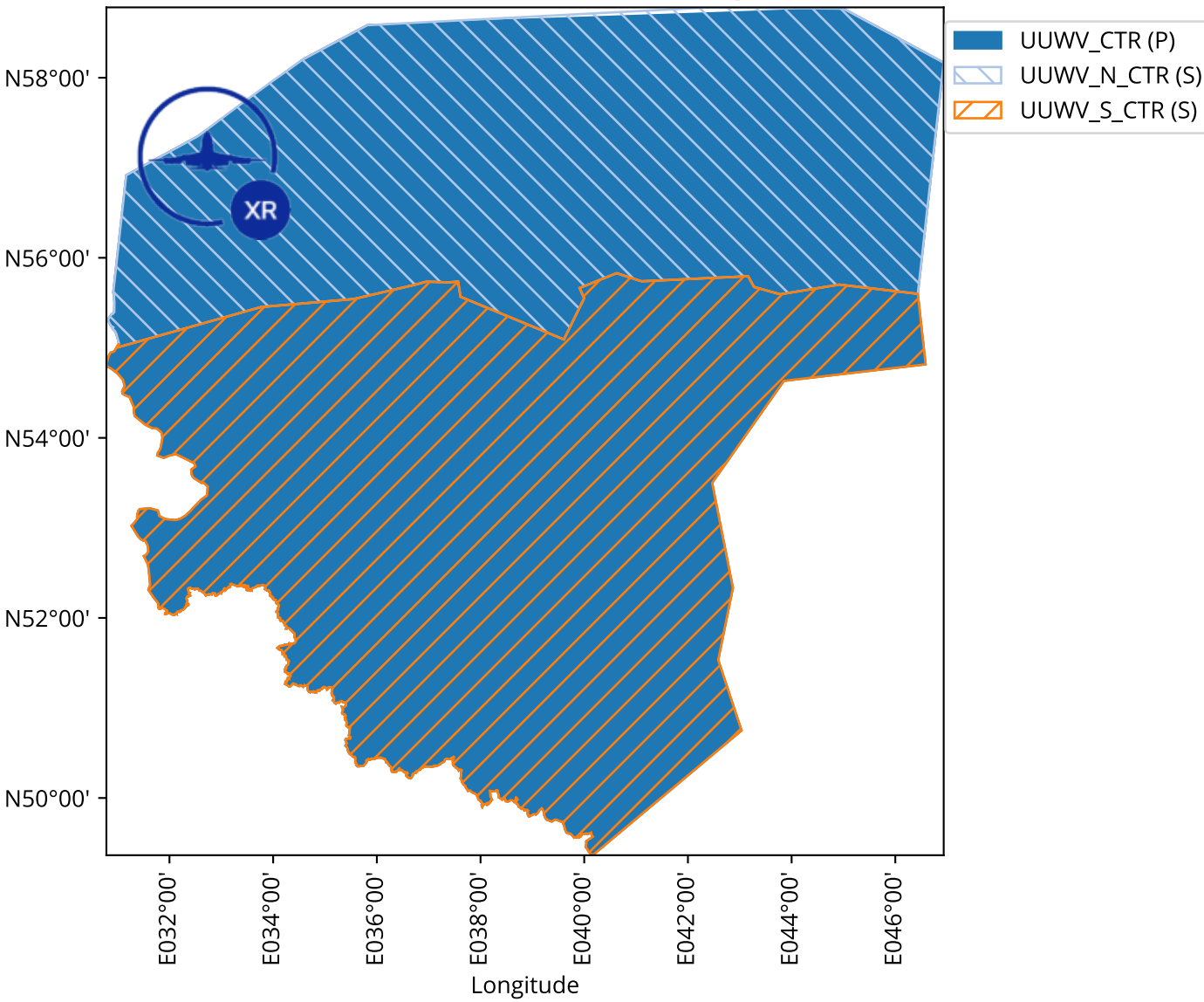


REGULATION ON SECTORIZATION OF _CTR AREAS OF RESPONSIBILITY

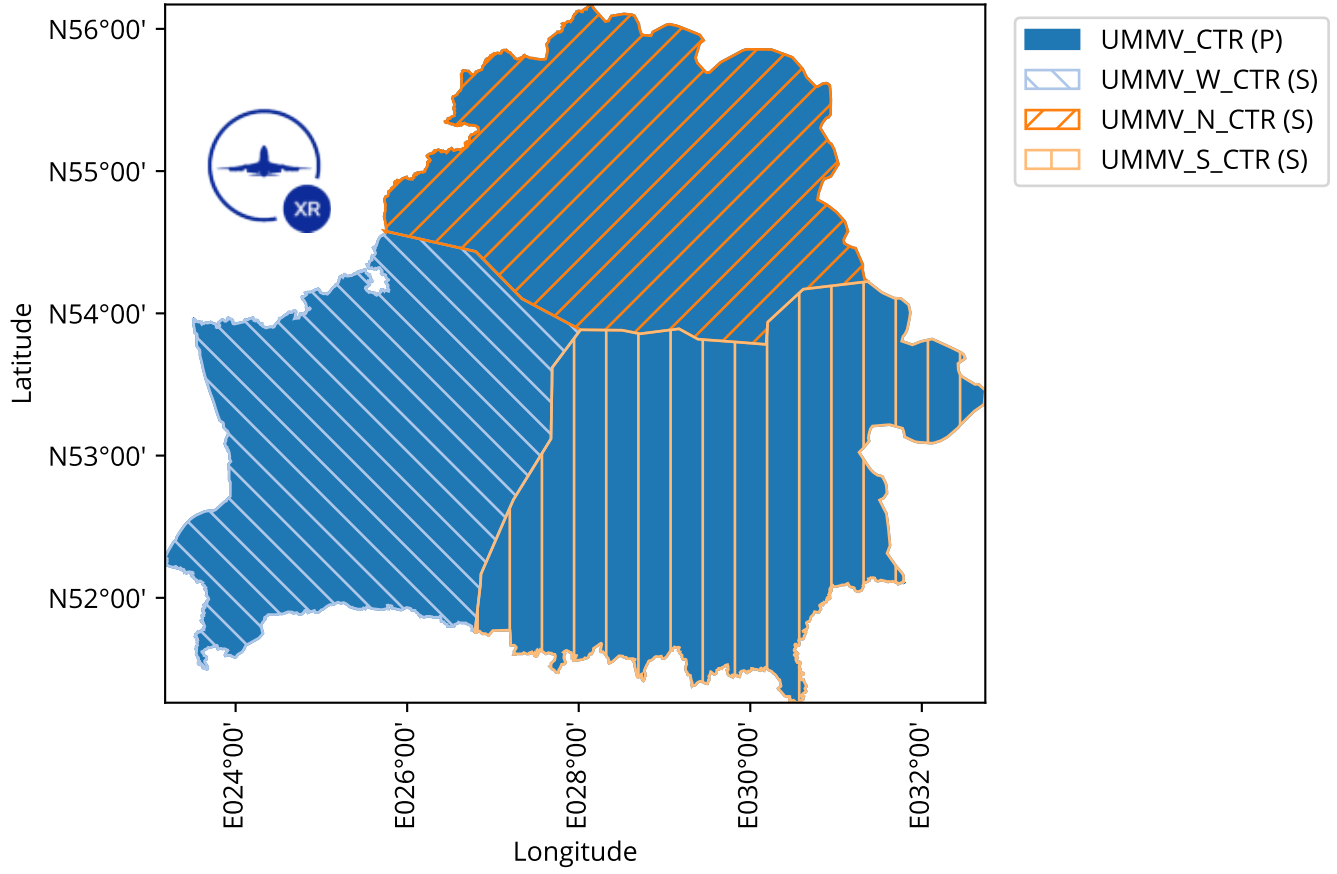
ANNEX #1

This annex includes maps of _CTR AOR sectors. The ATC Position identifier for each sector is provided within the map's legend. The letters in parentheses denote the classification of the sector. P stands for PRIMARY, S stands for SECONDARY.

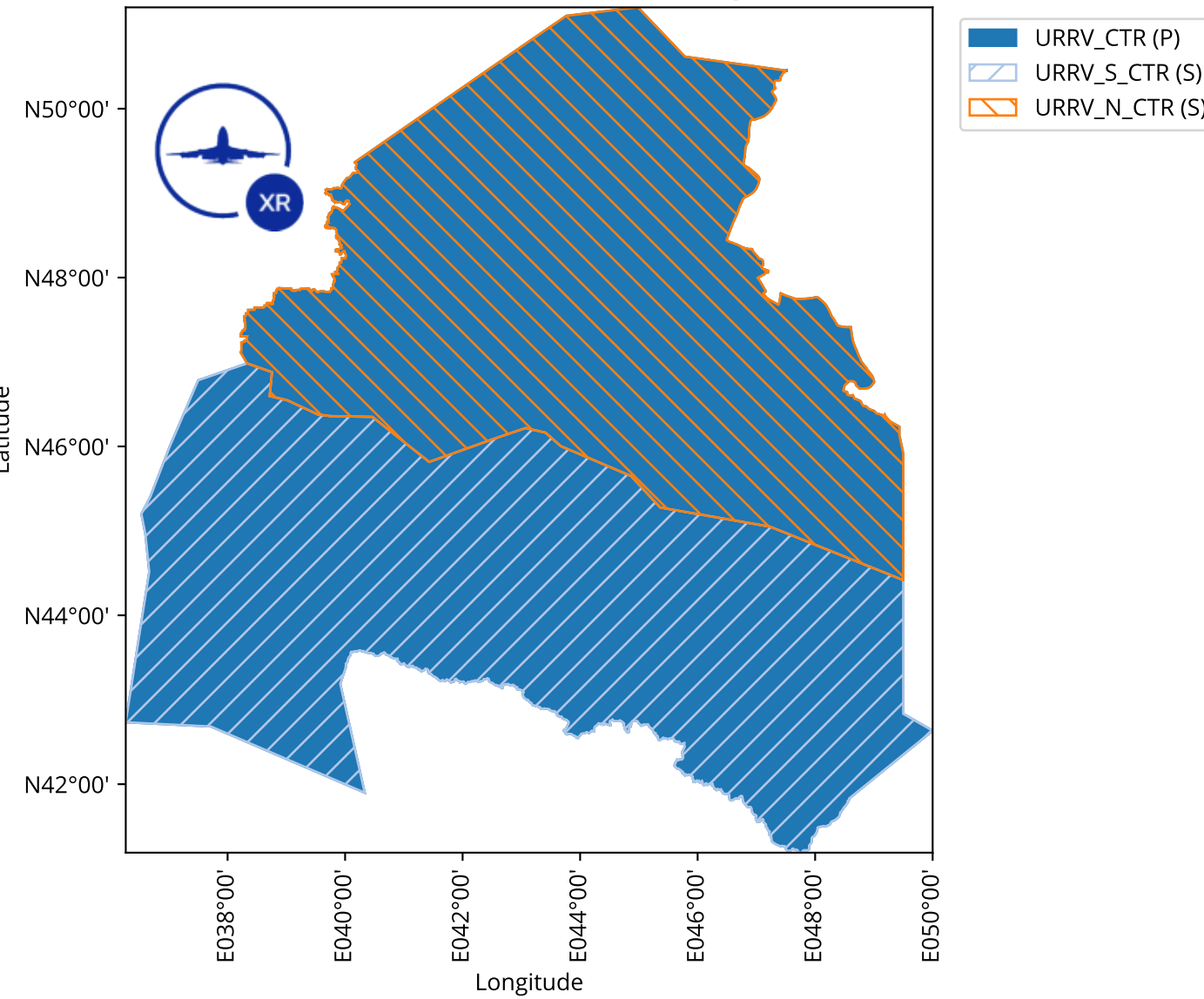
IVAO XR - UUWV FIR Sectors Map



IVAO XR - UMMV FIR SECTORS MAP



IVAO XR - URRV FIR Sectors Map



IVAO XR - USSV FIR SECTORS MAP

